



Dariann Court

DUPLEXES & TERRACES

📍 Inside Olive Park Estate (Opp. LandWey Office), after Lagos Business School, Off Lekki-Epe Expressway, Lagos.

A DEVELOPMENT BY



www.mkhproperties.com



**Dariann
Court**

An aerial view of a modern residential estate at sunset. The buildings are multi-story, white with dark accents, and feature balconies with glass railings. Several cars are parked in the courtyard. The sky is a mix of orange, yellow, and blue, with the sun low on the horizon. The overall atmosphere is serene and high-end.

OVERVIEW

Dariann Court is a modern estate comprising of multiple smart buildings structured to provide residents with optimal comfort, security and wellness.

Structures in the estate includes units of 4-Bedroom Fully Detached Duplexes with BQ, and 4-Bedroom Terraces with smart technology features.

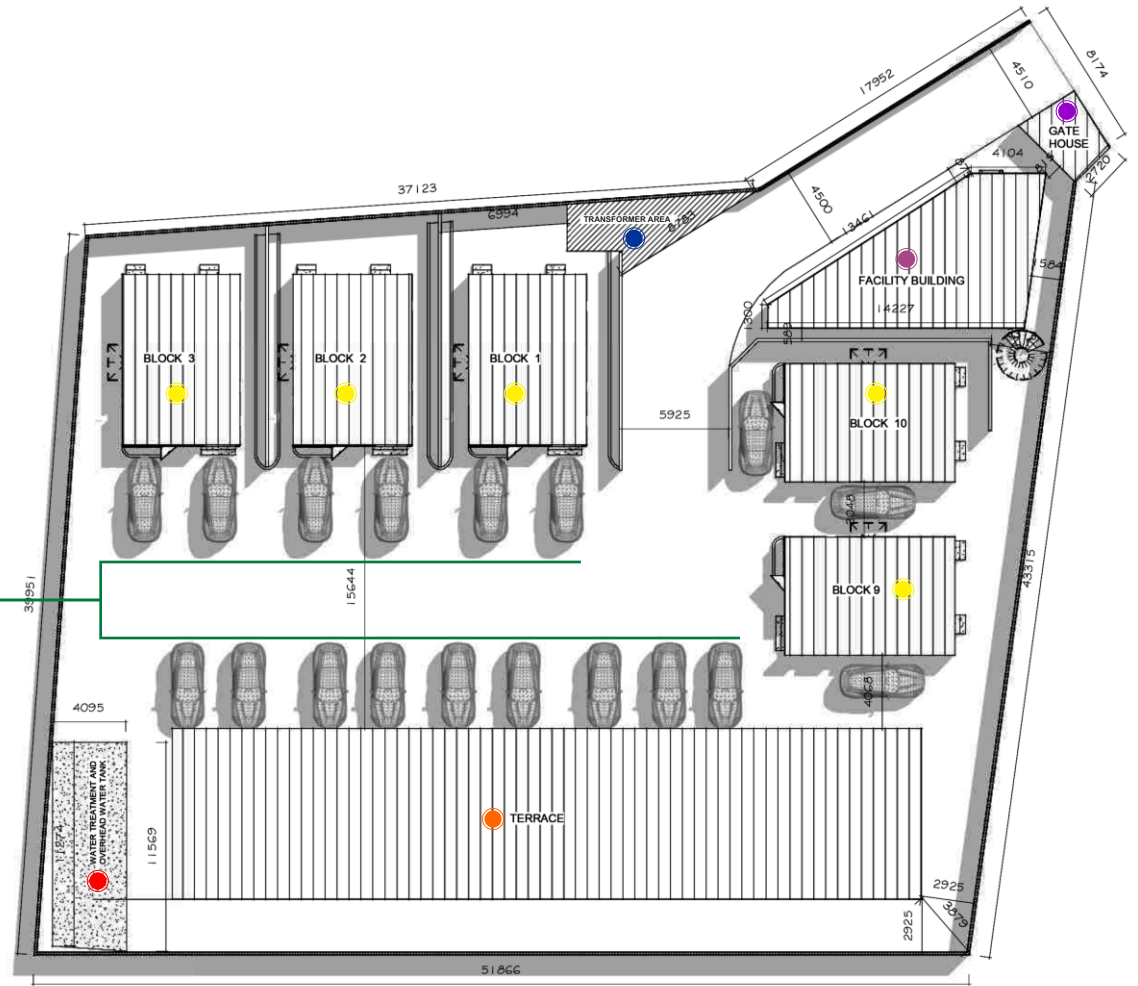
The estate is located in a serene neighborhood within Olive Park Estate (Opposite LandWey Office), after Lagos Business School, Off Lekki-Epe Expressway, Lagos, Nigeria.

Open for residential purpose, Dariann Court allows willing investors to own apartments that offer maximum comfort and a high-class lifestyle.



SITE LAYOUT

-  Water Treatment and Overhead Water Tank
-  Terrace
-  Duplex
-  Car Park
-  Transformer Area
-  Gate House
-  Facility Building

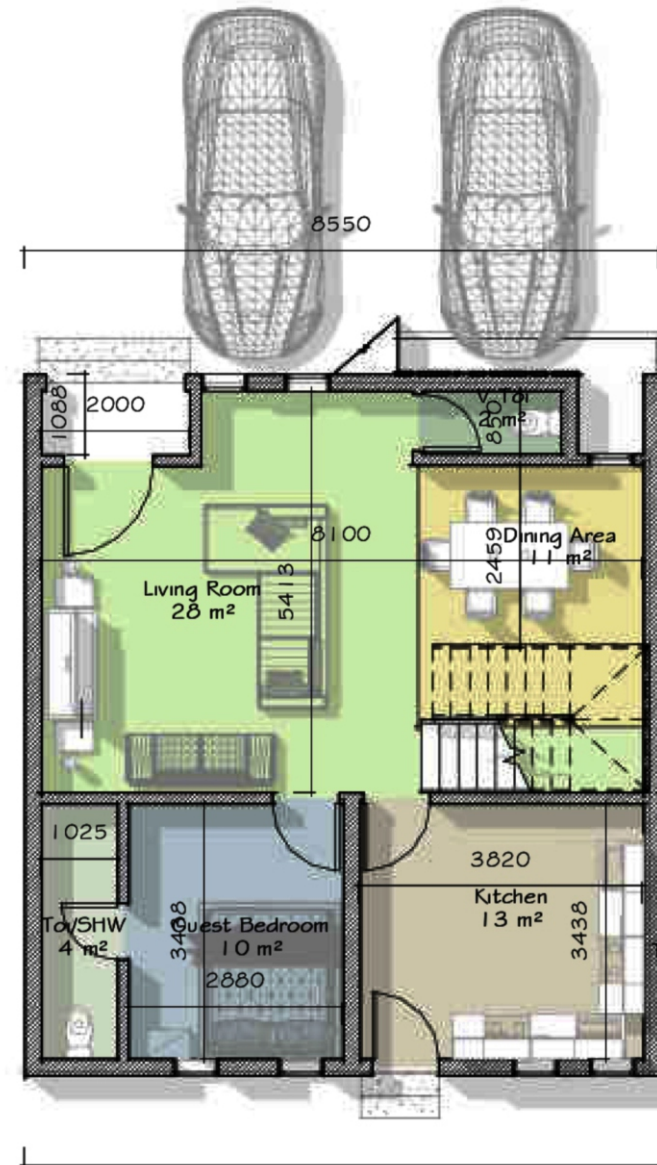




Dariann
Court

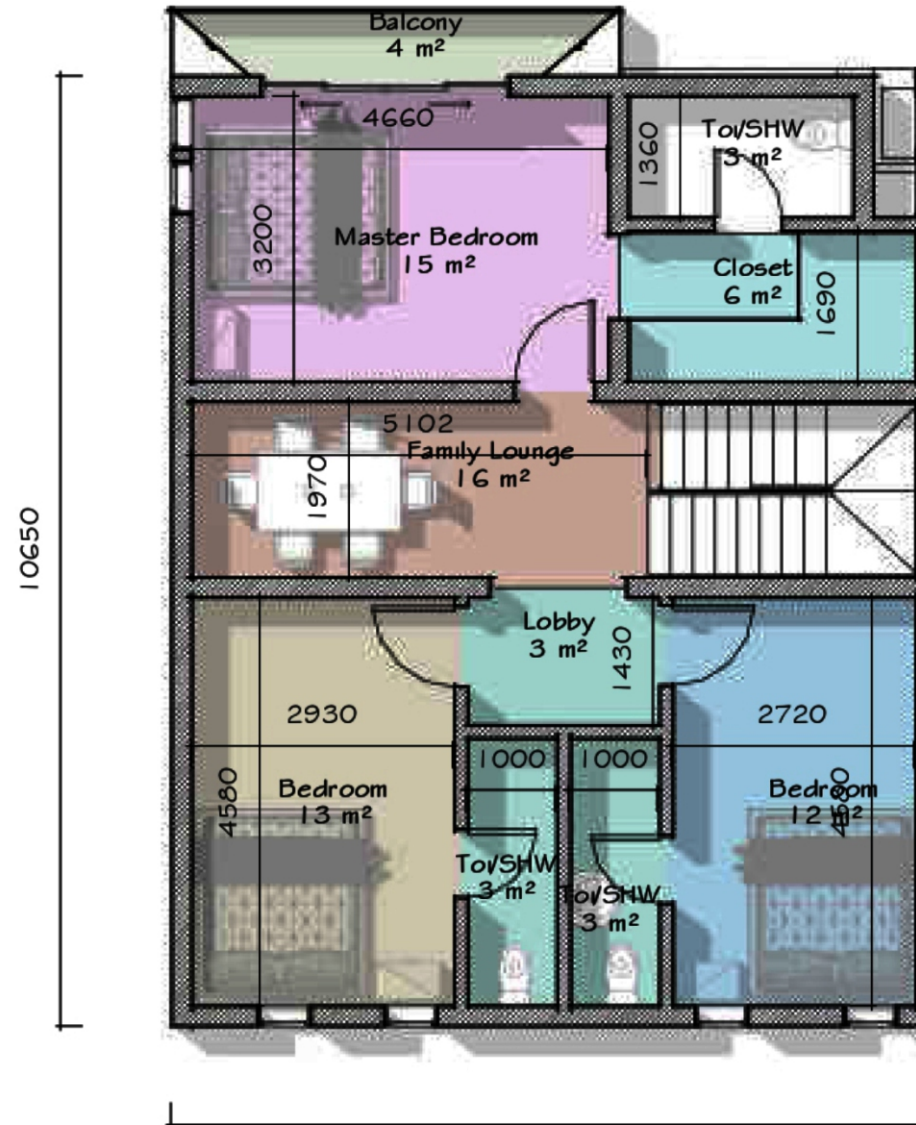
GROUND FLOOR LAYOUT (1 UNIT OF TERRACE)

-  Living Room (28sqm)
-  Dining Area (11sqm)
-  Guest Bedroom (10sqm)
-  Kitchen (13sqm)
-  Toilet/Shower (4sqm)



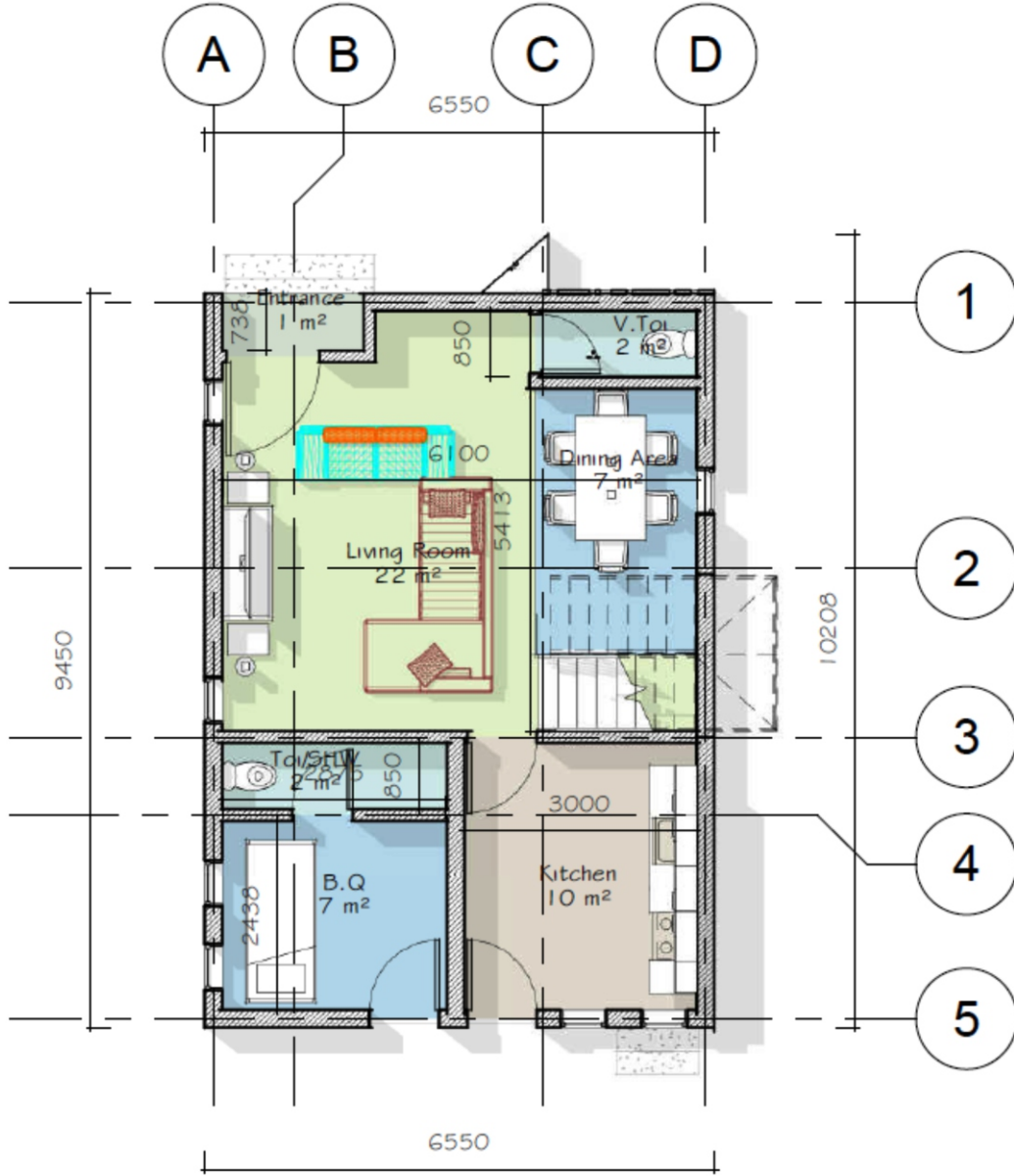
FIRST FLOOR LAYOUT (1 UNIT OF TERRACE)

-  Master Bedroom (15sqm)
-  Toilet/Shower (3sqm)
-  Closet (6sqm)
-  Family Lounge (16sqm)
-  Bedroom 1 (12sqm)
-  Bedroom 2 (13sqm)
-  Balcony (4sqm)



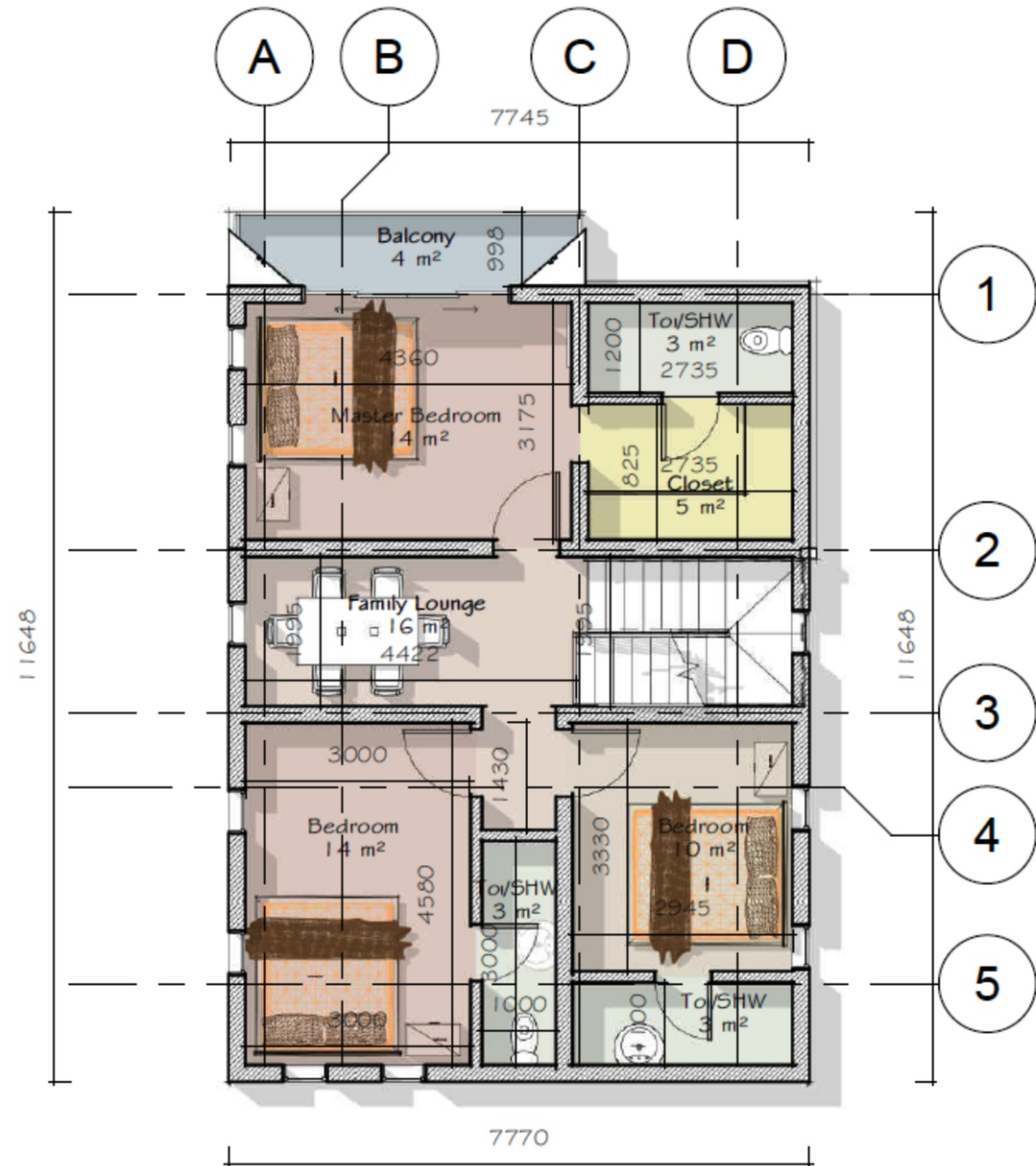
GROUND FLOOR LAYOUT (1 UNIT OF DUPLEX)

-  Living Room (22sqm)
-  Dining Area (7sqm)
-  Toilet/Shower (2sqm)
-  BQ (7sqm)
-  Kitchen (10sqm)



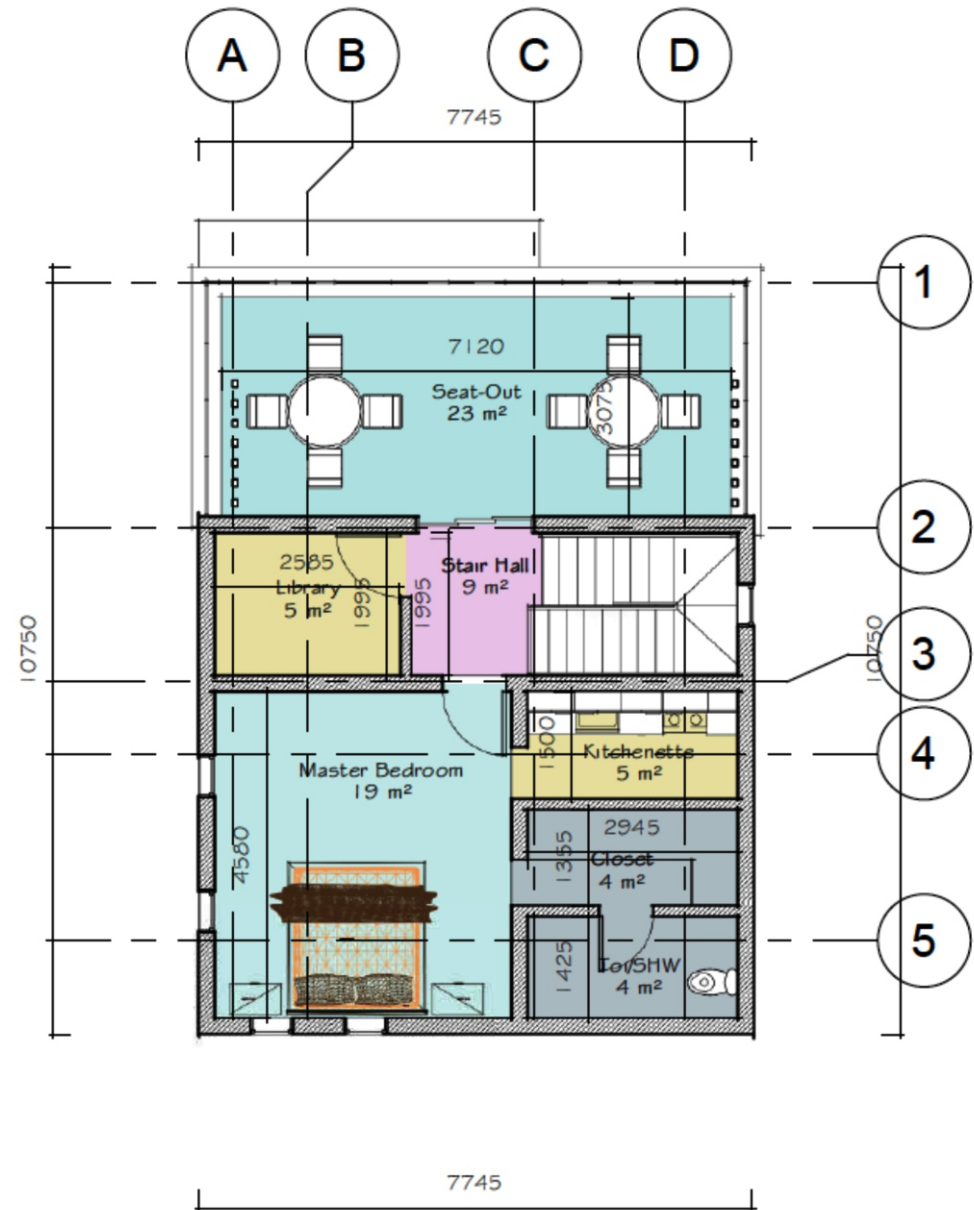
FIRST FLOOR LAYOUT (1 UNIT OF DUPLEX)

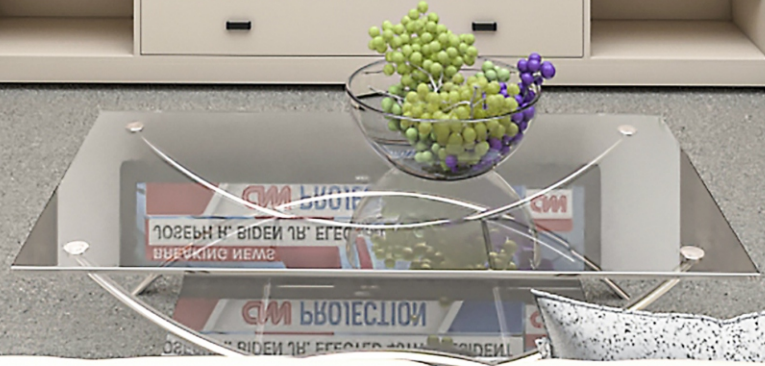
-  Master Bedroom (14sqm)
-  Toilet/Shower (3sqm)
-  Closet (6sqm)
-  Family Lounge (16sqm)
-  Bedroom 1 (10sqm)
-  Bedroom 2 (14sqm)
-  Balcony (4sqm)



PENT FLOOR LAYOUT

-  Seat-Out (23sqm)
-  Library (5sqm)
-  Stair Hall (9sqm)
-  Master Bedroom (19sqm)
-  Kitchen (5sqm)
-  Closet (4sqm)
-  Toilet/Shower (4sqm)





INTERIOR

Dariann
Court



AERIAL VIEW 1 (DAY)

 Dariann
Court



AERIAL VIEW 1 (NIGHT)



AERIAL VIEW 2 (DAY)

 Dariann
Court



AERIAL VIEW 2 (NIGHT)

 Dariann
Court



DETAILED VIEW

 **Dariann
Court**



DETAILED VIEW

**Dariann
Court**



DARIANN COURT NEIGHBORHOOD AERIAL VIEW



3D PICTURES



3D PICTURES



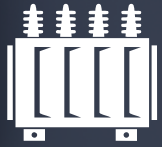
EXTRAS

This state-of-the-art estate also features a fitness gym and swimming pool; making it the ideal spot to unwind with family after a long day.

Each unit also comes with a double-door refrigerator, heat extractor, washing machine and microwave.



AMENITIES



**11kV
Transformer**



Solar



**Soundproof
Generator**



Gym



Swimming Pool



Green Area



Heat Extractor



Fire Alarm



Water Supply



**Reinforced
Closed Drainage**



CCTV Camera



Plumbing Services



Touch Switch



Voice Control



Microwave



**Smoke
Detector**



**Smart Door with
Fingerprint**



**Smart Video
Door Bell**



Inverter



Motion Light



**Double-door
Refrigerator**



Washing Machine



**Yearly
Repainting**



Oven

PAYMENT PLAN (DUPLEX)

4-BEDROOM FULLY DETACHED DUPLEX + BQ 6-Month Payment Plan

Initial Deposit	1st Month	2nd Month	3rd Month	4th Month	5th Month	6th Month
20,000,000.00	17,500,000.00	17,000,000.00	17,000,000.00	17,000,000.00	17,000,000.00	17,000,000.00
TOTAL (N)						122,500,000.00

4-BEDROOM FULLY DETACHED DUPLEX + BQ 12-Month Payment Plan

Initial Deposit	1st Month	2nd Month	3rd Month	4th Month	5th Month	6th-12th Month
20,000,000.00	9,000,000.00	9,000,000.00	8,800,000.00	8,800,000.00	8,800,000.00	8,800,000.00
TOTAL (N)						126,000,000.00

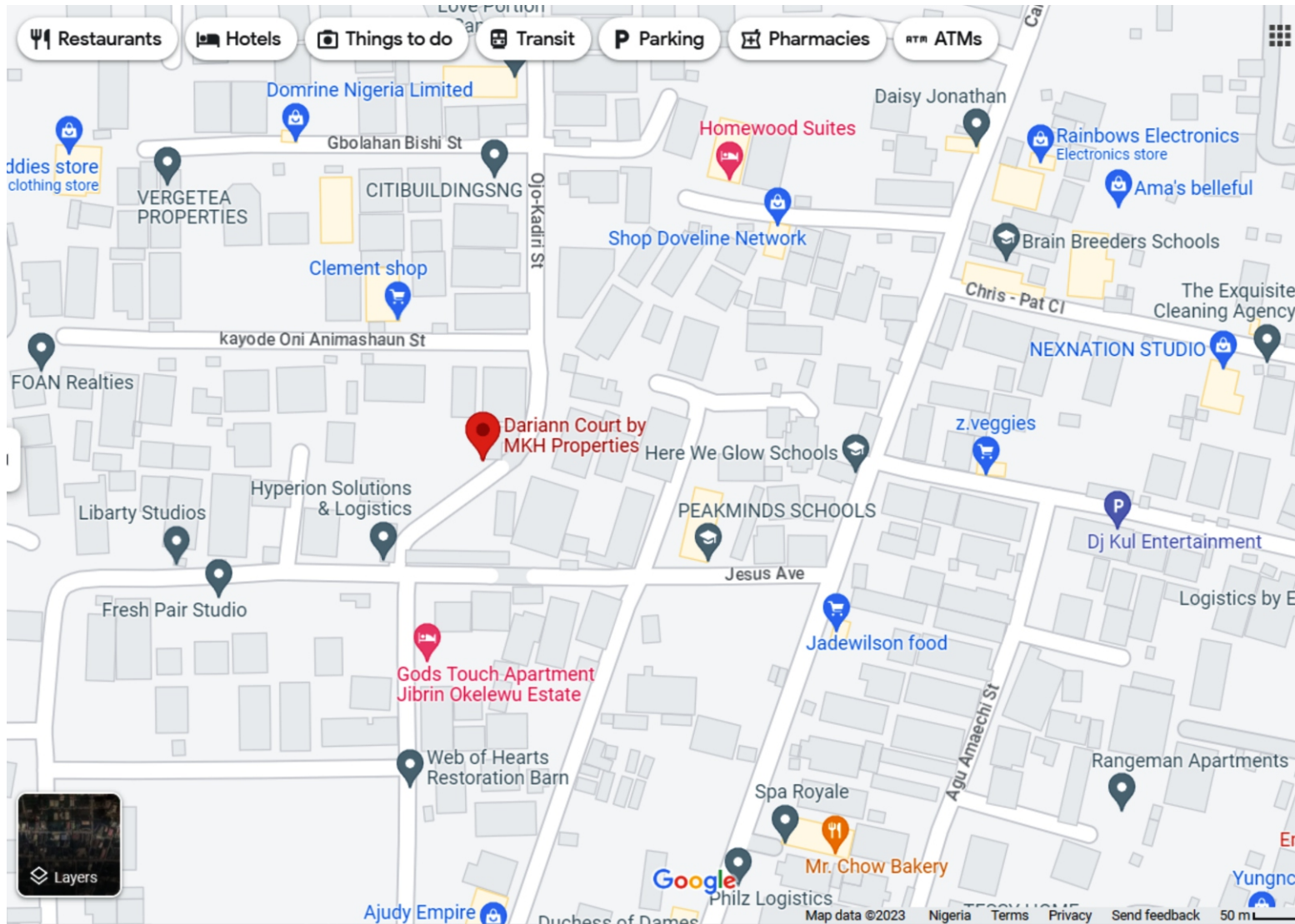
PAYMENT PLAN (TERRACE)

4-BEDROOM TERRACE 6-Month Payment Plan

Initial Deposit	1st Month	2nd Month	3rd Month	4th Month	5th Month	6th Month
15,000,000.00	11,500,000.00	11,200,000.00	11,200,000.00	11,200,000.00	11,200,000.00	11,200,000.00
TOTAL (N)						82,500,000.00

4-BEDROOM TERRACE 12-Month Payment Plan

Initial Deposit	1st Month	2nd Month	3rd Month	4th Month	5th Month	6th-12th Month
15,000,000.00	7,500,000.00	6,500,000.00	5,800,000.00	5,800,000.00	5,800,000.00	5,800,000.00
TOTAL (N)						87,000,000.00



Tap image for Dariann Court location

Download Form & FAQ here



FINANCIAL PARTNER



ACCOUNT DETAILS

Bank Name:

KEYSTONE BANK

Account Name:

MKH Properties Limited

Account Number:

1012569381 (NGN)

1012569398 (USD)

1012591551 (EUR)

1012591544 (GBP)

A DEVELOPMENT BY



P R O P E R T I E S

www.mkhproperties.com