

MKH CITY

**MKH** *City*



Olunde Scheme, Academy, off Lagos-Ibadan  
Expressway, Oyo State, Nigeria

A Development By



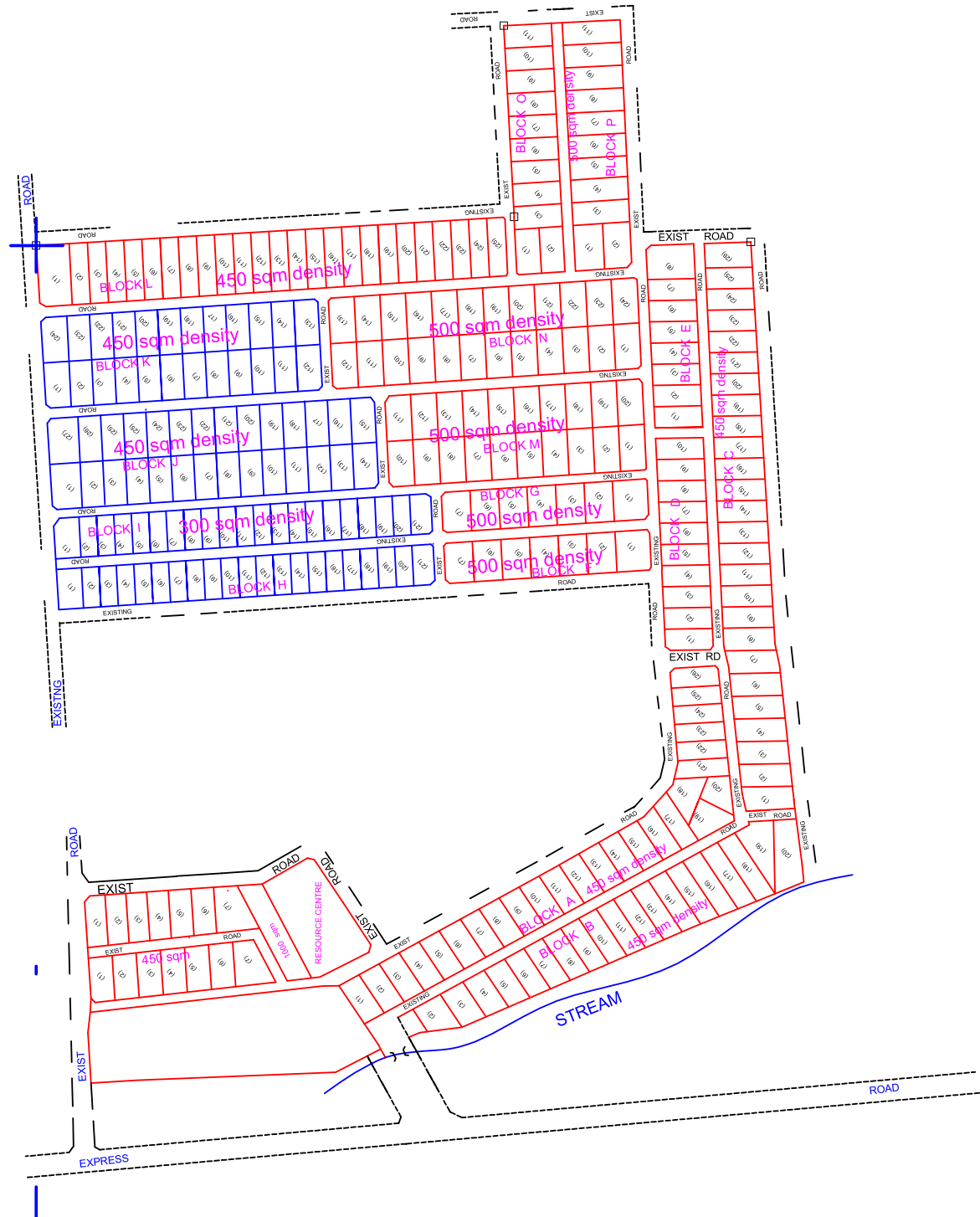


# MKH *City*










*...not for everyone*

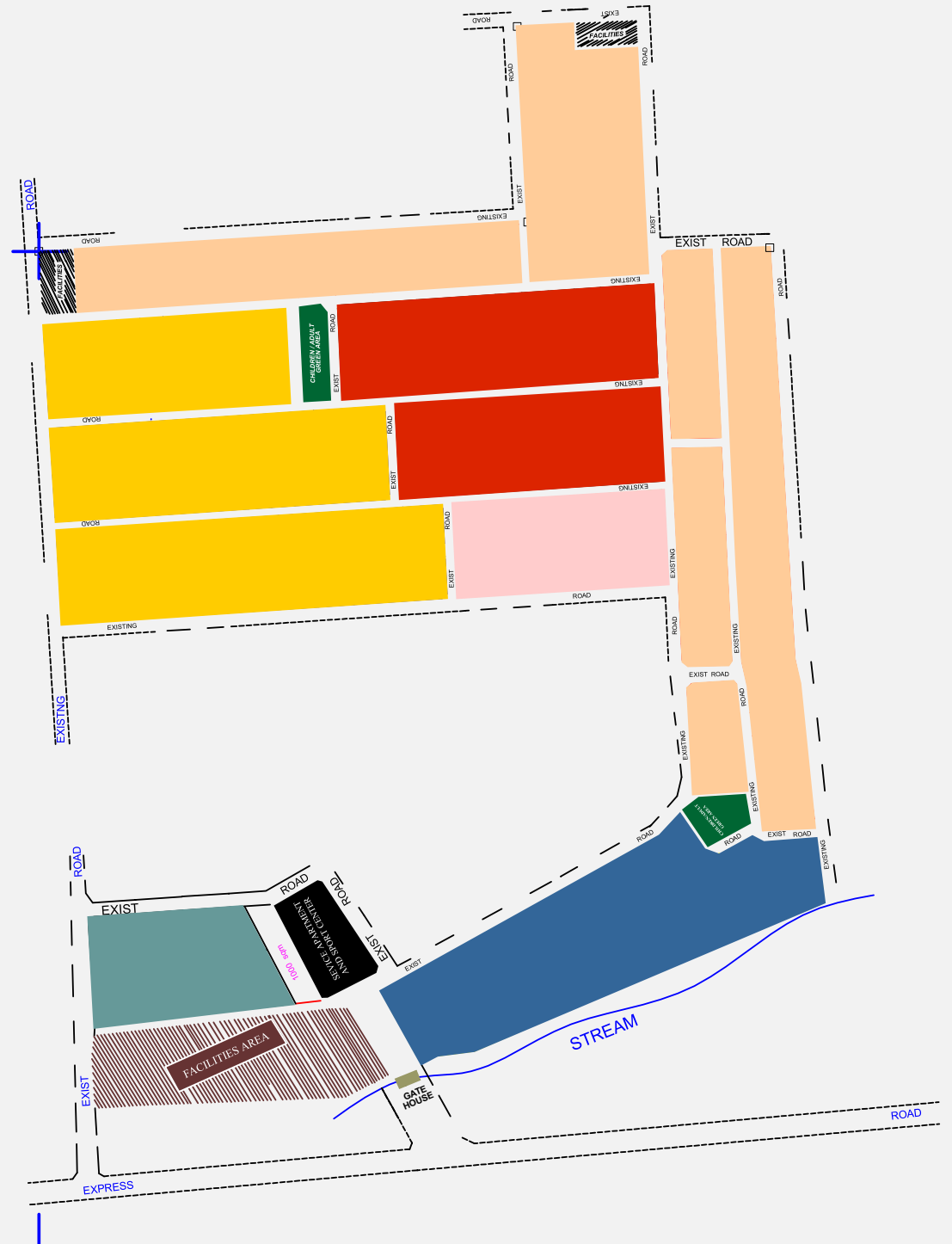
**MKH City**, an avant-garde residential estate, stands as a pinnacle of modern living and an unparalleled investment opportunity in Ibadan, Oyo State, Nigeria. Developed by the esteemed MKH Properties Limited, it spans 40 Acres.

# ESTATE LAYOUT



# SITE LAYOUT

-  2 Bedroom Maisonette
-  VIP & Fully Detached
-  Service Area
-  Reserved Area
-  4-Bedroom Terraces
-  3/4 Bedroom Bungalows
-  Facilities Area
-  Service Apartment & Sport Centre
-  Green Area



**TITLE**



## Ibadan Property Land Allocation



**AERIAL VIEW**

**40 ACRES**



Olunde Scheme, Academy, off Lagos-Ibadan  
Expressway, Oyo State, Nigeria

## Estate Location

Situated in Olunde Scheme, Academy, off Lagos-Ibadan Expressway, Oyo State, Nigeria



**MKH City**  
A DEVELOPMENT BY  
**MKH PROPERTIES**

Olunde Scheme, Academy, off Lagos-Ibadan Expressway, Oyo State, Nigeria

**ESTATE LAYOUT**

**Luxury, Comfort & Leisure**

**LAGOS OFFICE**  
MKH Building, Eleganza Complex, Opposite VGC, Lekki, Lagos.

**IBADAN OFFICE**  
138, Liberty Stadium Road, Off Ring Road, Ibadan, Oyo.

[www.mkhproperties.com](http://www.mkhproperties.com)

The billboard features a detailed estate layout diagram with various plot numbers and a stream. The background of the billboard is light blue with a grid pattern. The text is in a mix of bold, sans-serif and script fonts. The MKH logo is prominent at the top left, and the MKH Properties logo is at the top right. The location and office information are clearly displayed at the bottom.

A wide, multi-lane road stretches into the distance at sunset. The sky is a mix of orange, yellow, and purple. The road has white dashed lines and a solid white line on the right. A green signpost is in the foreground on the left. In the background, there are power lines and a few trees.

## ESTATE FEATURES

# Good Road Network

---

Traverse the estate seamlessly through meticulously planned and well-maintained roads, ensuring a smooth commute and enhancing the overall accessibility of the estate.





ESTATE FEATURES

# Reinforced Closed Drainage

---

Embrace a lifestyle devoid of concerns as MKH City flaunts avant-garde drainage systems, proficiently engineered to prevent flooding and maintain the pristine cleanliness of the estate.



**ESTATE FEATURES**

# Perimeter Fencing

---

Elevate your sense of security with a fortified perimeter, providing an additional layer of assurance and safeguarding your investment.



**ESTATE FEATURES**

# Gated Community

---

Bask in the privacy and exclusivity of a gated community, where tranquility converges with luxury, offering a sanctuary for those who appreciate the finer things in life.



**ESTATE FEATURES**

## Potable Water Supply

---

Revel in the luxury of constant access to clean and reliable water, meeting your daily needs effortlessly.



**ESTATE FEATURES**

# Uninterrupted Power Supply

---

Experience uninterrupted power supply, enhancing your comfort and convenience, and ensuring a lifestyle devoid of disruptions.

## ESTATE FEATURES

# Security

Your safety is our priority with 24/7 security ensuring a secure and peaceful environment as we involve a round-the-clock surveillance system.





# Elite Networking

---

Immerse yourself in a community of like-minded individuals, fostering connections that transcend the ordinary. MKH City is not just a residence; it's a network of success and prosperity.

# ESTATE FEATURES



**TENNIS COURT**



**SWIMMING POOL**



**FOOTBALL PITCH**



**4-BEDROOM FULLY DETACHED  
+ BQ + SELF SWIMMING POOL +  
PENTHOUSE**



# 4-BEDROOM FULLY DETACHED INTERIOR



**Living Room**

# 4-BEDROOM FULLY DETACHED INTERIOR

**Dining Area**

---



# 4-BEDROOM FULLY DETACHED INTERIOR



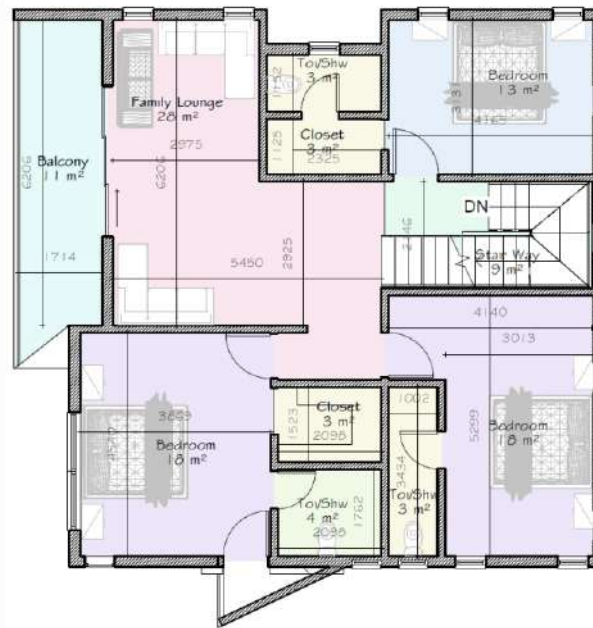
**Bedroom**

---

# 4-BEDROOM FULLY DETACHED FLOOR PLAN



**GROUND FLOOR (DETACHED)**



**FIRST FLOOR (DETACHED)**



**PENT FLOOR (DETACHED)**

## 4-BEDROOM TERRACES



# 4-BEDROOM TERRACE INTERIOR



## Living Room

# 4-BEDROOM TERRACE INTERIOR



**Kitchen**

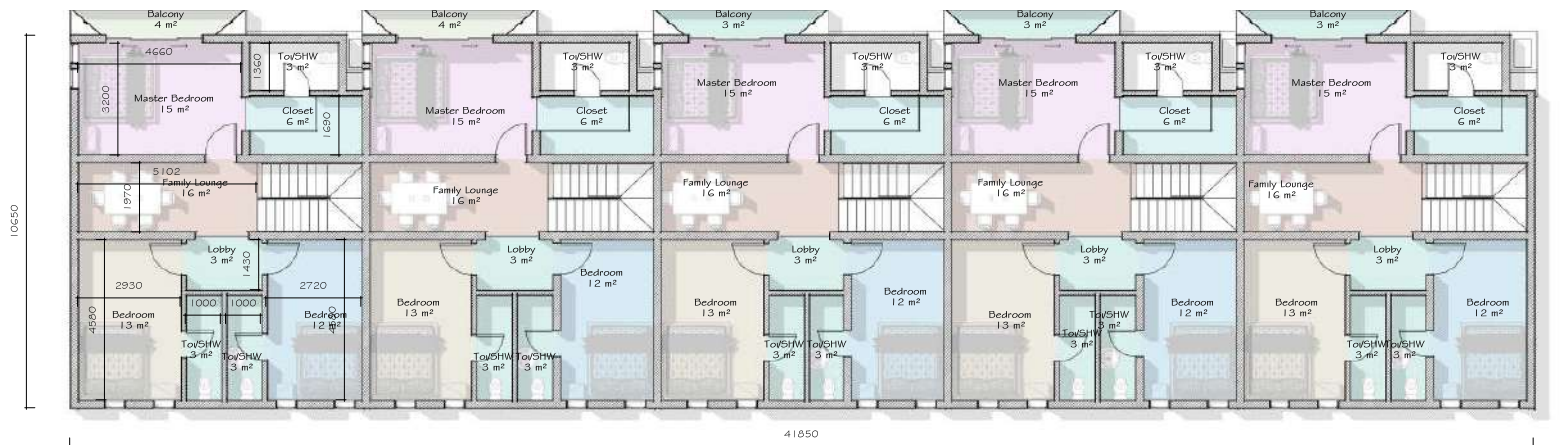
---



# 4-BEDROOM TERRACE FLOOR PLAN



## GROUND FLOOR PLAN



## FIRST FLOOR PLAN

# 3-BEDROOM BUNGALOW + BQ



# 3-BEDROOM BUNGALOW + BQ INTERIOR



**Bedroom**

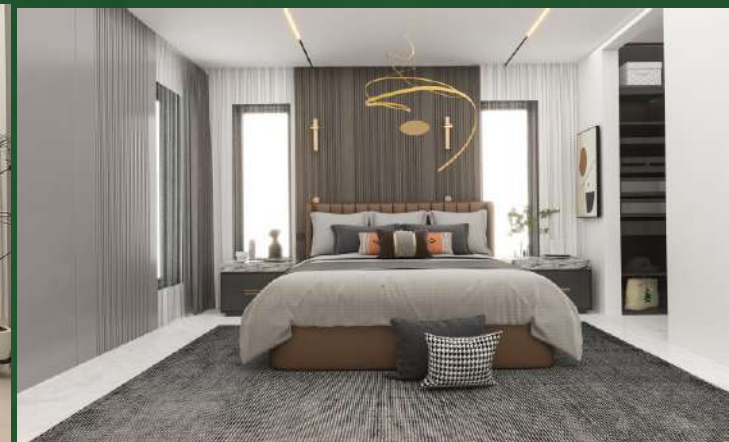
---



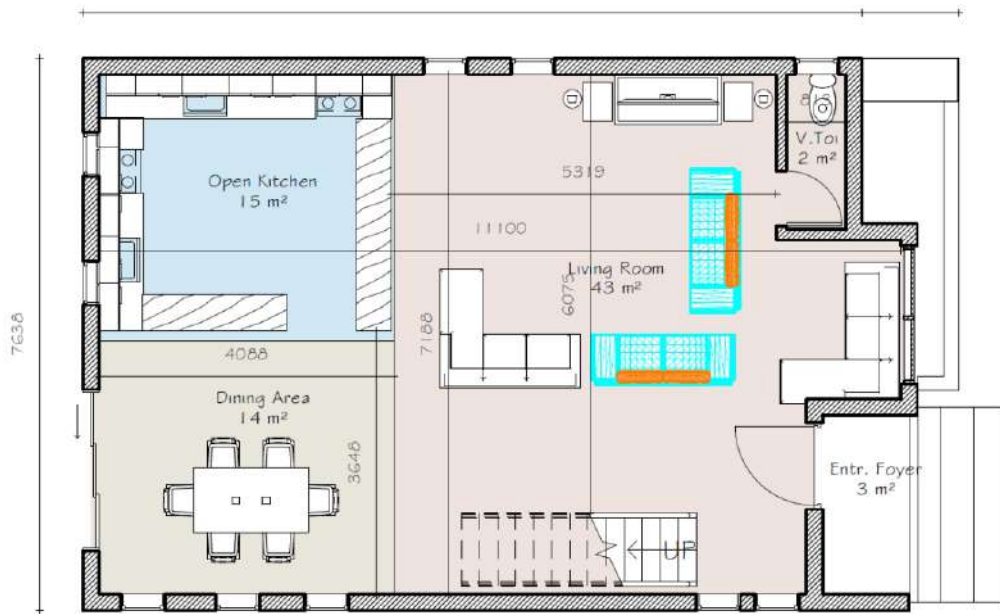
## 2-BEDROOM MAISONNETTE



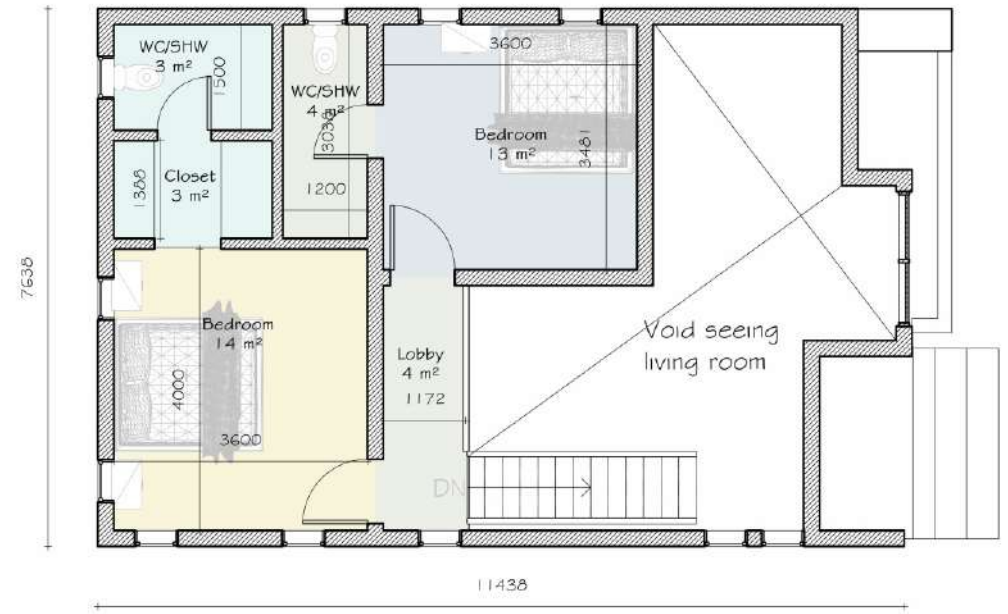
# MAISONETTE INTERIORS



# 2-BEDROOM MAISONETTE FLOOR PLAN



**Ground Floor Plan (Maisonette)**



**First Floor Plan (Maisonette)**

# UPCOMING PROJECT



**MKH** *City*

**BLOCK OF FLATS**





## NEAREST LANDMARK

### Lead City University

A hub of academic excellence,  
adding value to your investment.



### Fresh FM

A renowned radio station, contributing  
to the vibrancy of the location.

**NEAREST LANDMARK**



## 5-minute drive from Lagos-Ibadan Expressway

Convenient access to the major  
expressway for easy travel.



## 10-minute drive from Challenge roundabout

Proximity to Challenge roundabout for  
additional convenience.



**NEAREST LANDMARK**

## 18-minute drive from Ibadan Airport

Swift access to the Airport for domestic and international travel.



## 15-minute drive from Oyo State Secretariat

Easy reach to the administrative heart of Oyo State.

## GUARANTEED BENEFITS OF MKH CITY

### Infrastructure:

Adequate roads, sidewalks, street lighting, and drainage systems.

### Green Spaces:

Parks, playgrounds, and landscaped areas for recreation and relaxation.

### Utilities:

Reliable water supply, electricity, sewage systems, and waste management services.

### Security:

Measures such as gated entrances, security patrols, and surveillance cameras to ensure resident safety.

### Community: Facilities

Amenities like community centers, swimming pools, gyms, and sports facilities.

## GUARANTEED BENEFITS OF MKH CITY

### Accessibility:

Proximity to schools, healthcare facilities, shopping centers, and public transportation options

### Environmental Sustainability:

Incorporation of eco-friendly practices such as green building materials, rainwater harvesting, and renewable energy sources.

### Well Designed Housing Units:

Variety in housing types, sizes, and styles to accommodate diverse needs and preferences.

### Social Integration:

Initiatives to foster a sense of community and social cohesion among residents, such as events and communal spaces.

### Maintenance & Management:

Effective management and maintenance services to ensure the upkeep of common areas and facilities.

## LAND SIZE & PURCHASE PRICE



OUTRIGHT (ALL INCLUSIVE)

500 SQM

**N20M**

6 Months  
Interest  
Free

INITIAL DEPOSIT N2M

## LAND SIZES & PURCHASE PRICES



OTHER SIZES

300SQM

**N14,800,000**

450SQM

**N18,700,000**

## HOUSE TYPE & PURCHASE PRICES

3-BEDROOM BUNGALOW + BQ

**N37,000,000**

2-BEDROOM MAISONETTE

**N42,000,000**

4-BEDROOM TERRACES

**N65,000,000**

4-BEDROOM FULLY DETACHED  
+ BQ + SELF SWIMMING POOL +  
PENTHOUSE

**N120,000,000**

PS: ALL ENTRANCE DOORS COME WITH FIREPROOF DOORS.

## LAND PAYMENT PLAN

**0 - 6  
MONTHS**

**Outright  
(Interest Free)**

**0 - 12  
MONTHS**

**10% Interest**

**0 - 24  
MONTHS**

**20% Interest**



## HOUSE PAYMENT PLAN

**0 - 6  
MONTHS**

**Interest Free**

**0 - 12  
MONTHS**

**25% Interest**

## PAYMENT ACCOUNTS



### FINANCIAL PARTNER



## ACCOUNT DETAILS

Bank Name: KEYSTONE BANK  
Account Name: MKH Properties Limited  
Account Number: 1012569381 (NGN)

Bank Name: PROVIDUS BANK  
Account Name: MKH Properties Limited  
Account Number: 5402036819 (NGN)

## CONTACT US



info@mkhproperties.com  
sales@mkhproperties.com



[www.mkhproperties.com](http://www.mkhproperties.com)

**A DEVELOPMENT BY**



---

**MKH***City* Where Dreams Find a Home. Embrace  
a Lifestyle of Luxury, Security, and Elite Networking, all  
within minutes from key city landmarks urban and network.

[www.mkhproperties.com](http://www.mkhproperties.com)